



EGX-350

Desktop Engraver

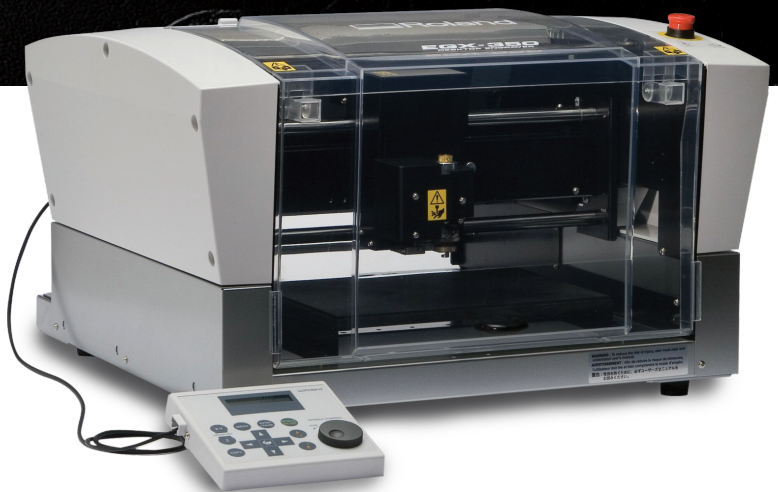


BRINGING YOUR IDEAS TO LIFE

The EGX-350 was built from the ground up to quickly and easily produce today's most popular engraving jobs. Create beautiful custom signs and nameplates. Turn ordinary gifts, awards, and promotional items into treasured mementos by personalizing them with names, events or dates. Or produce design templates for heat pressing rhinestones onto t-shirts, handbags and other apparel items

A Complete Engraving Solution

A complete solution, the EGX-350 comes with everything you need to get started. Bundled EngraveStudio™ software makes it fast and easy to produce everything from simple nameplates to elegant wood signs and luxury gift items. Advanced features include a V-carving mode for producing a hand-carved look. The software imports designs in AI and EPS file formats and lets users preview them, saving time and materials. It also allows users to create design templates for heat pressing rhinestones onto custom apparel.



Speed, Power, Precision

Built to offer you a host of profitable applications, the EGX-350 engraver is a true workhorse and a profitable addition to your business. With a 12 x 9 inch work area and powered by a 20,000 rpm DC brushless motor, the desktop engraver quickly produces a wide range of popular jobs with crisp text and clear graphics. When you add the reliability and support that come with owning a Roland, no other device comes close in value.



Turn ordinary items into treasured mementos.

Engrave a wide variety of materials including acrylic, brass and wood.

Produce elegant outdoor signs.

Create templates for rhinestone decorated apparel.

Versatile Performance

In addition to personalizing awards, promotional items and rhinestone-decorated apparel, the EGX-350 turns out high quality indoor and ADA signage. Your signs will have an upscale look while meeting all ADA regulations for schools, hotels, restaurants, office buildings and apartments.

Safe and Easy to Use

An advanced surface detector simplifies setup by automatically determining the height of the material (Z-zero) for quality engraving at a consistent depth. A hand-held control panel with a large backlit LCD screen lets you quickly select engraving options, such as spindle speed. An adjustable flip cover opens in two positions allowing efficient access to the engraved product. A vacuum adapter attaches easily to the spindle to ensure clean operation.



Materials

The EGX-350 easily handles a wide variety of materials, including plastic, acrylic, aluminum, stainless steel, brass and wood. Unlike laser engravers, the EGX-350 preserves the original colors and textures of wood, brass and artificial marbles for a beautifully finished look.

Roland Support

Roland's international ISO certifications are your assurance of quality products and service. We build reliable, high-performance products and back them up with first-rate product warranties, customer service and a wide variety of supplies and accessories. In addition, we offer opportunities to learn tips and tricks, equipment maintenance and profitable business opportunities through our Roland University workshops taught by industry experts.

Optional Hardware and Software

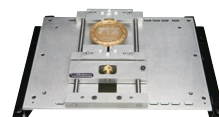
A complete selection of vises, tools and software ensure that the EGX-350 can handle any job.



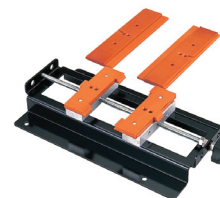
EngraveStudio is a comprehensive design and production program for professional engravers.



EGX T-Slot secures objects up to 12"(X) x 9"(Y) [305mm (X) x 230mm (Y)] for precision engraving.



EGX Vises come complete with a pin jig featuring 10 pins, a pen fixture, ruler bar fixtures and medallion/seal fixtures.



Center Vise holds objects up to 5.9"(X) x 5.8"(Y) x 1.3"(Z).

PRODUCT SPECIFICATIONS

MODEL	EGX-350
Table Size	12"(X) x 9.1"(Y) [305 x 230 mm]
Maximum Cutting Area	12"(X) x 9.1"(Y) x 1.6"(Z) [305 (X) x 230 (Y) x 40 mm (Z)]
Feed Rate	X, Y-axis: Up to 2.4 ips (60mm/sec). Z-axis: Up to 1.2 ips (30mm/sec).
Software Resolution	0.004" (0.01 mm) /step or 0.001" (0.025 mm) /step (XY axis only)
Mechanical Resolution	X, Y-axis: 0.0001" (0.0025 mm)/step
Spindle Motor	Brushless DC motor, max. 50 W
Revolution Speed	5,000 to 20,000 rpm
Tool Chuck	Cutter holder and collet
Interface	USB (compliant with Universal Serial Bus Specification Revision 1.1) and serial (RS-232C-compliant)
Instruction System	RML-1
Power Requirements	AC 100 to 120 V $\pm 10\%$, 1.3 A, 50/60 Hz (overvoltage category II, IEC 60664-1) or AC 220 to 240 V $\pm 10\%$, 0.6 A, 50/60 Hz (overvoltage category II, IEC 60664-1)
Acoustic Noise Level	During operation: 60 dB(A) or less (when not cutting); During standby: 40 dB(A) or less, As specified by ISO 7779
External Dimensions	24.3"(W) x 23.3"(D) x 15.5"(H) [616 (W) x 591 (D) x 393 (H) mm]. When cover is open: 24.3"(W) x 23.3"(D) x 26.5"(H) [616 (W) x 591 (D) x 673 (H) mm]
Weight	75 lb. (34 kg)
Operation Temperature	41" to 104" F (5" to 40" C)
Operating Humidity	35 to 80% (no condensation)
Accessories	Power cord, depth regulator nose (nose unit), nose-unit retainer (retaining screw, spring), spare mounting screw (for the cutter holder), character cutter (diameter 3.175 mm), flat cutter (diameter 3.175 mm), wrench, solid collet (diameter 3.175 mm), solid collet (diameter 4.36 mm), hexagonal wrench, hexagonal screwdriver, handy panel, adhesive sheet, vacuum adapter for chip cleaning, Roland Software CD-ROM, Roland EngraveStudio™ CD-ROM, Roland Software Program Guide, Roland EngraveStudio™ Program Guide, and User's Manual
Roland EngraveStudio™ System Requirements	
OS	Windows Vista™ (32-bit edition), Windows® XP, or Windows® 2000
CPU	Pentium® III, 1 GHz or faster recommended
RAM	Windows Vista: 512 MB or more recommended, Windows XP/2000: 256 MB or more recommended

Distributed by:

Graphic Horizons, Inc., 1911 W. Reno Street, Broken Arrow, OK 74012
PH: 918 251-7882 - TF: 800 804-5531 - Email: Sales@GraphicHorizonsInc.com

Imagine. **Roland®**

FOR COMPLETE PRODUCT SPECIFICATIONS AND FEATURES, OR MORE INFORMATION, CALL 800-542-2307 OR VISIT WWW.ROLANDDGA.COM
ROLAND DGA CORP. | 15363 BARRANCA PARKWAY | IRVINE, CALIFORNIA 92618-2216 | 800.542.2307 | 949.727.2100 | CERTIFIED ISO 9001:2000
RDGA-EGX350-01 July 2009